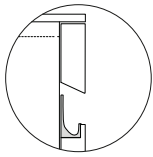


Design Marc Sadler

## Project



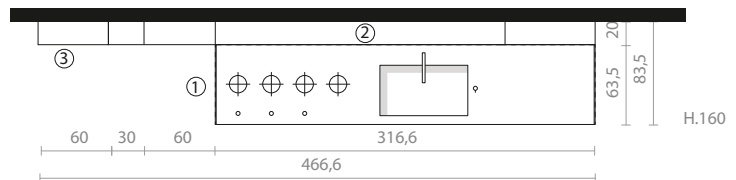
SEI

FRONTALE SUPERIORE  
IN ACCIAIO

## Technical features

## 1. SEI

Blue Fes Fenix NTM® and antique st. steel wall fronts  
Antique st. steel worktop with moulded sink and hob  
opening system: drawer+pull-out door  
Black anodized aluminium handle  
Black anodized aluminium plinth h. 8 cm



## 2. SIPARIO

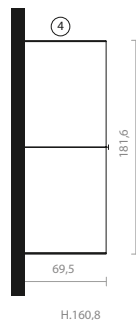
Accessorised back panel in Black anodized aluminium and Blue Fes stratified with aluminium accessories and black anodized aluminium open elements

## 3. QUINTE

Black anodized aluminium open tall units

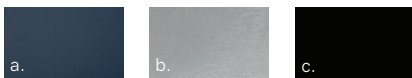
## 4. MADIA EL. APPLIANCES

Black ingo Fenix NTM® fronts  
Black anodized aluminium vertical handle  
Door at floor level



H.160,8

## Finishes



- a. Blue Fes Fenix NTM®  
b. Antique st. steel  
c. Black anodized aluminium